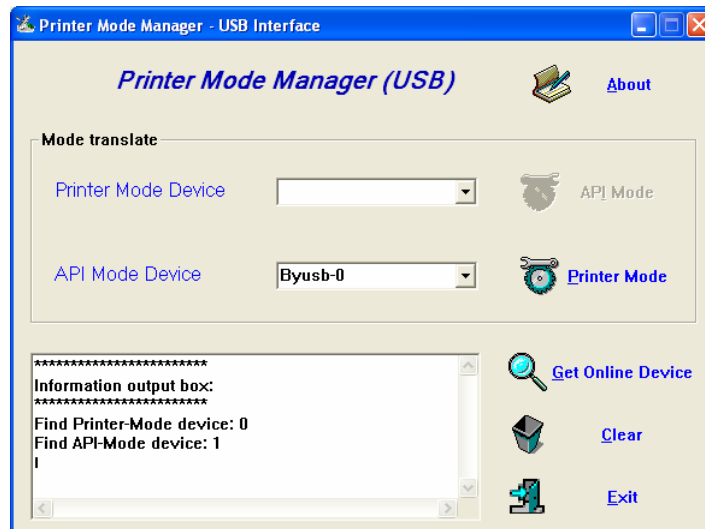


## Installing SNBC Printers on 64-Bit PCs

To install the SNBC Windows™ USB printer driver on a 64-bit PC, you must first connect the printer to a Windows™ 32-bit PC. Before beginning verify that the 32-bit PC has the appropriate Windows™ USB driver installed and working. The Printer Mode Manager v1.11 is included in the driver folder.

1. Connect the SNBC printer to the 32-bit PC with the USB cable provided with the printer.
2. At the 32-bit PC, execute PrinterModeManager.exe. The Printer Mode Manager screen displays:



3. Select the correct printer in the *API Mode Device* field and click the **Printer Mode** button.



4. The power off message displays. Power the printer off and on again.



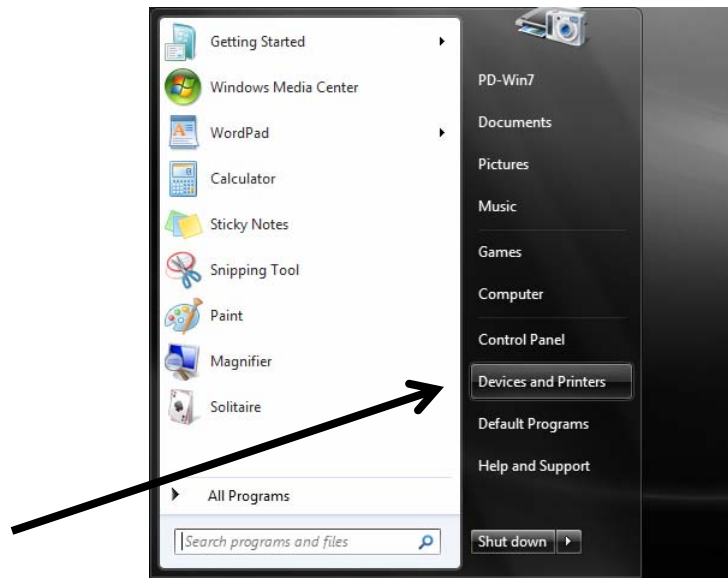
5. The printer mode manager should now have the AIP Mode button highlighted. (This indicates that the printer is now in the printer mode.) This is the correct mode for the printer to be in when it will be installed on a 64-bit PC.



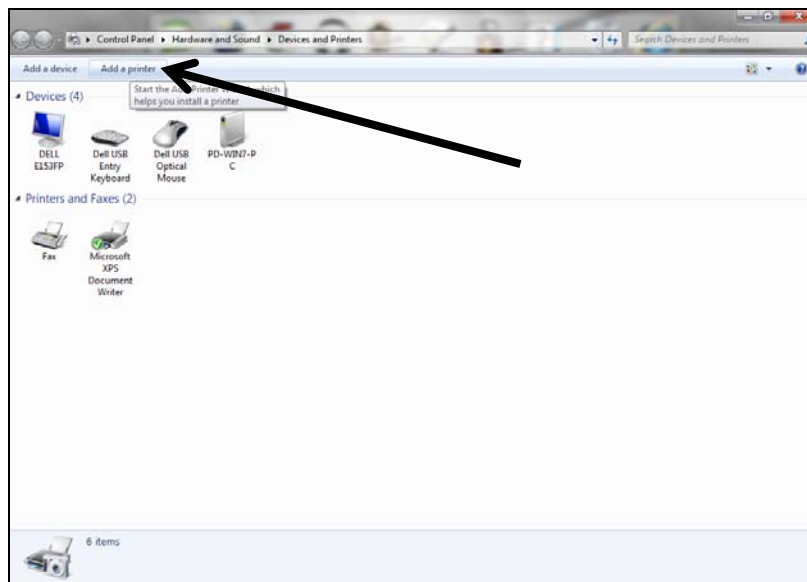
## 64-Bit PC Installation

6. Connect the printer to the 64-bit PC using the USB cable provided. The printer must be in printer mode (completed in steps 1-5 above).

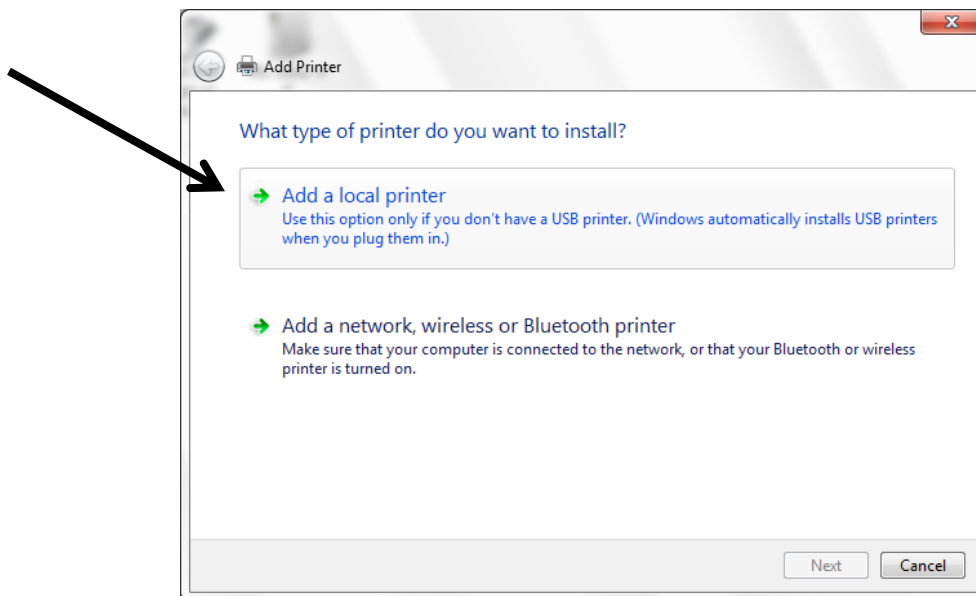
7. Select Devices and Printers (Printers and Faxes) from the Start Menu.



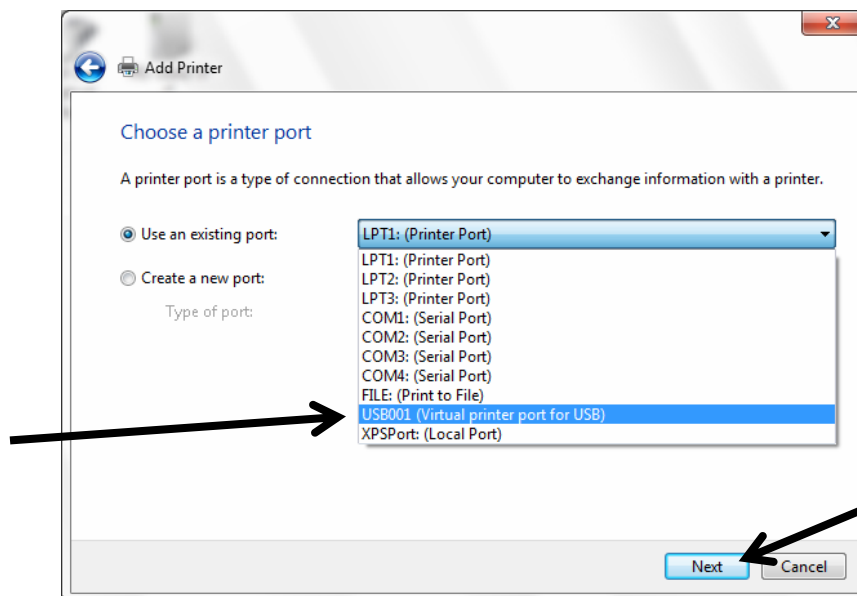
8. Select *Add a printer*.



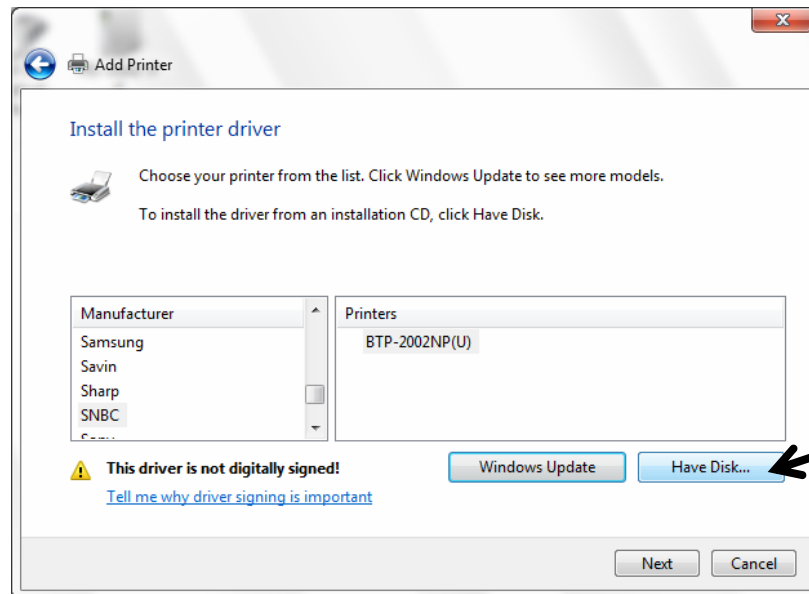
9. Select *Add a local printer*.



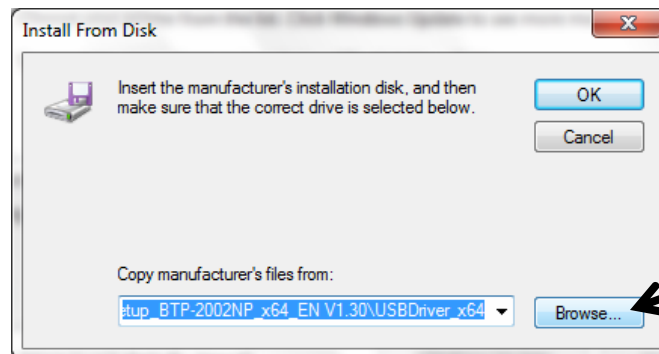
10. Select *USB001 (Virtual printer port for USB)*. Click **Next**.



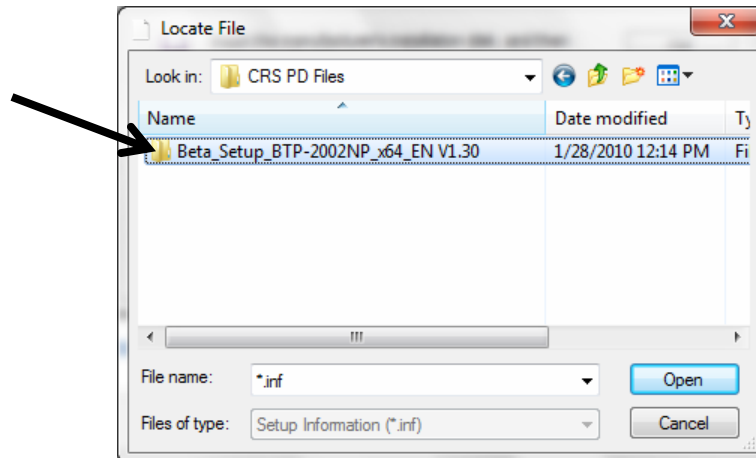
11. Click **Have Disk...**



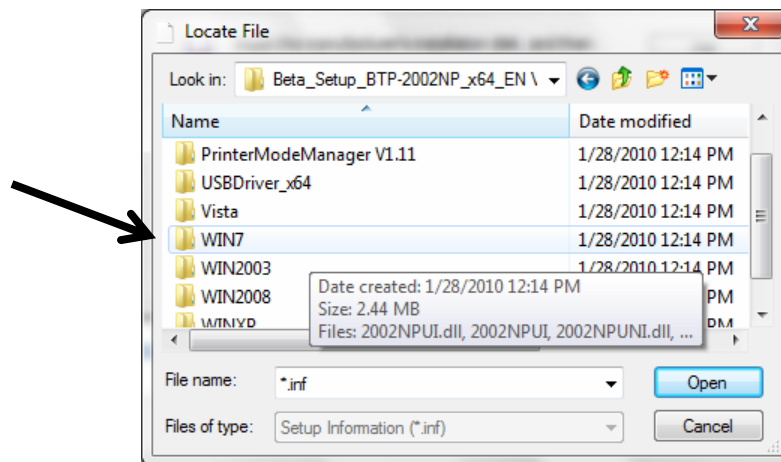
12. Browse to the folder containing the 64-bit driver.



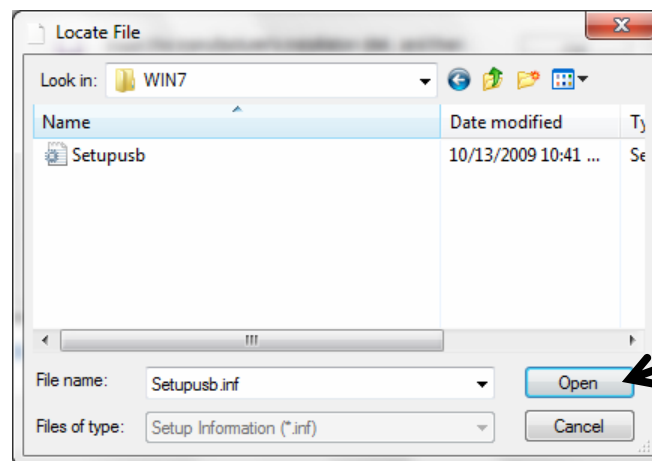
13. Open the driver folder



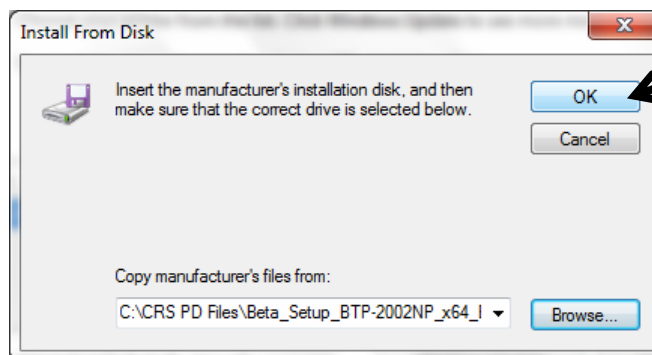
14. Select the applicable Windows™ version.



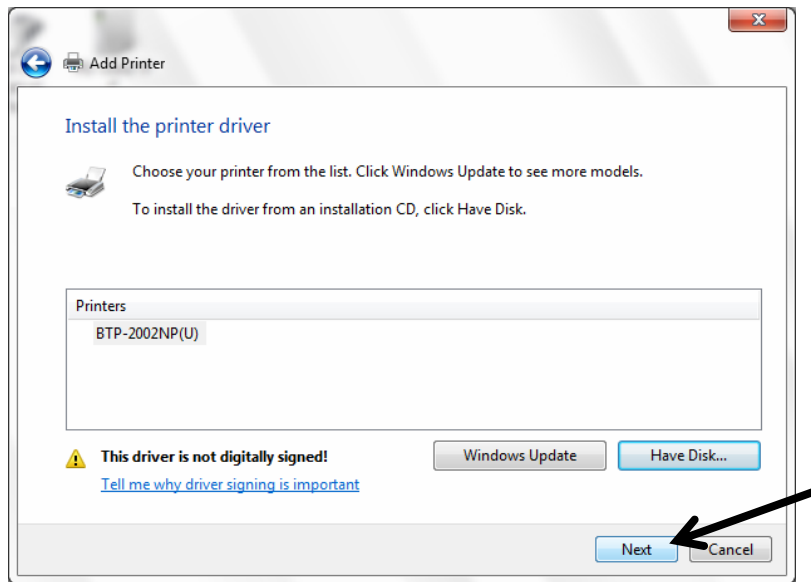
15. Select *Setupusb*. Click **Open**.



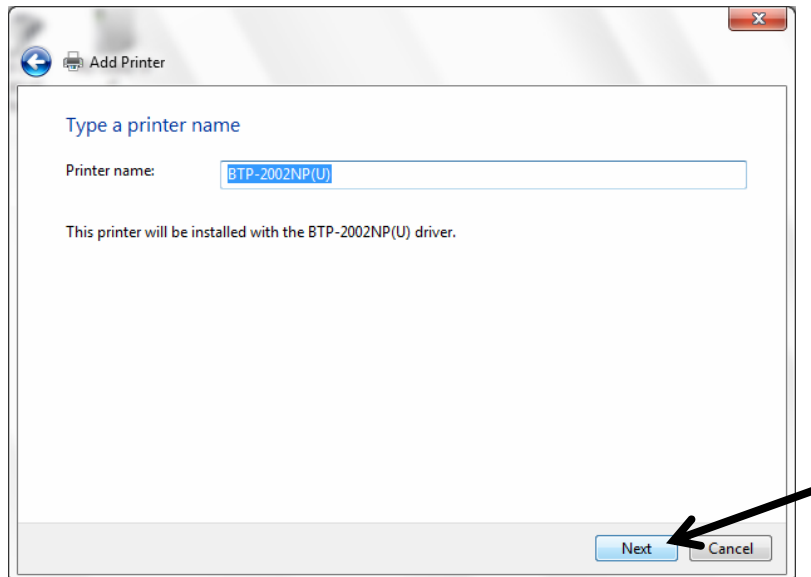
16. Click **OK**.



17. Click **Next**.



18. You can change the name of the printer, or keep the default. Click **Next**.



19. The driver is successfully installed. Click **Print a test page** and then click **Finish** to exit.

